

BAYPORT SECURITISATION (RF) LTD

# INVESTOR REPORT

APRIL 2021

*your future now*

**BAYPORT**  
FINANCIAL SERVICES

## Monthly Investor Report

Note: This report has been prepared in accordance with IFRS 9.

### Financial statistics for the period ended April 2021

		Apr 21	Mar 21	Feb 21	Jan 21	Dec 20	Nov 20	Oct 20	Sep 20	Aug 20	Jul 20	Jun 20	May 20
<b>Performance ratios *</b>													
Total income as a % of ave gross loans and advances (excl. dividends)	%	17.6%	17.7%	17.8%	18.0%	18.2%	18.3%	18.4%	18.3%	18.4%	18.4%	18.4%	18.3%
Dividend income as a % of ave gross loans and advances	%	0.1%	0.0%	0.0%	0.1%	0.2%	0.4%	0.5%	0.5%	0.6%	0.6%	0.7%	0.7%
Total income as a % of ave gross loans and advances (incl. dividends)	%	17.7%	17.6%	17.8%	18.1%	18.3%	18.8%	18.9%	18.8%	19.0%	19.1%	19.1%	19.1%
Direct and indirect expenses to ave gross loans and advances	%	4.8%	4.3%	4.1%	3.8%	3.5%	3.3%	3.0%	2.6%	2.6%	2.6%	2.7%	2.9%
Direct and indirect expenses to total income (excl. dividends)	%	27.1%	24.4%	22.8%	21.0%	19.4%	18.1%	16.1%	14.2%	14.1%	14.1%	14.5%	16.1%
Direct and indirect expenses to total income (incl. dividends)	%	26.9%	24.4%	22.7%	20.8%	19.2%	17.7%	15.7%	13.8%	13.6%	13.6%	13.9%	15.5%
Return on assets (incl. dividends)	%	1.0%	1.2%	1.5%	1.7%	(1.4%)	(0.4%)	0.1%	(0.4%)	(0.6%)	(0.6%)	(1.1%)	(1.0%)
Gearing ratio	times	2.5	2.5	2.5	2.5	2.5	2.5	2.5	2.5	2.5	2.4	2.4	2.4
Interest margin	%	11.3%	11.3%	11.4%	11.4%	11.5%	11.5%	11.4%	11.2%	11.2%	11.0%	10.9%	10.8%
<b>Income statement extract</b>													
Interest income	R '000	68 622	69 710	60 633	69 845	71 959	72 201	77 906	66 402	75 306	78 106	72 669	73 619
Non-interest revenue (excl. dividends)	R '000	4 151	4 277	4 310	4 063	5 085	4 487	4 504	5 230	4 130	4 245	4 421	4 158
Dividend income	R '000	10 050	-	-	-	(7 436)	-	-	-	-	-	-	2 923
<b>Total income</b>	R '000	<b>82 823</b>	73 987	64 943	73 908	69 608	76 688	82 410	71 632	79 437	82 351	77 090	80 700
Interest expenses	R '000	(22 861)	(22 240)	(20 124)	(21 936)	(22 185)	(20 999)	(21 431)	(22 090)	(22 747)	(23 022)	(25 612)	(26 645)
Direct and indirect expenses	R '000	(24 015)	(23 576)	(23 636)	(24 466)	(26 150)	(28 870)	(29 643)	(21 093)	(20 977)	(17 456)	(6 485)	(300)
<b>Total expenses</b>	R '000	<b>(46 876)</b>	(45 816)	(43 760)	(46 402)	(48 335)	(49 869)	(51 074)	(43 183)	(43 724)	(40 478)	(32 097)	(26 945)

\* 12 months rolling average

## Monthly Investor Report

### Financial statistics for the period ended April 2021 (continued)

		Apr 21	Mar 21	Feb 21	Jan 21	Dec 20	Nov 20	Oct 20	Sep 20	Aug 20	Jul 20	Jun 20	May 20
<b>Asset and credit quality ratios</b>													
Gross loans and advances	R '000	5 183 800	5 077 850	5 125 373	5 230 149	5 332 061	5 167 012	5 093 806	5 109 217	5 117 854	5 200 101	5 161 508	5 189 151
Non-performing loans ("NPLs")	R '000	1 912 092	1 962 019	1 976 051	1 962 950	1 961 702	1 961 205	1 948 220	1 950 428	1 950 576	1 946 368	1 927 278	1 918 975
Carrying value of written off book	R '000	238 844	237 014	235 596	234 361	231 912	229 777	228 148	226 216	224 725	224 856	224 435	223 803
Impairment provision	R '000	2 337 527	2 356 471	2 387 268	2 440 857	2 470 069	2 495 462	2 515 772	2 538 655	2 556 228	2 593 270	2 596 585	2 633 095
Net loans and advances	R '000	3 085 117	2 958 393	2 973 701	3 023 653	3 093 903	2 901 328	2 806 182	2 796 778	2 786 351	2 831 687	2 789 357	2 779 859
Number of loans on book		127 494	127 024	129 823	132 891	135 936	134 578	135 400	137 097	138 660	141 800	142 305	144 175
Non-performing loans ratio	%	36.9%	38.6%	38.6%	37.5%	36.8%	38.0%	38.2%	38.2%	38.1%	37.4%	37.3%	37.0%
Provision coverage	%	45.1%	46.4%	46.6%	46.7%	46.3%	48.3%	49.4%	49.7%	49.9%	49.9%	50.3%	50.7%
Investment in Zenthyme Investments (Proprietary) Limited	R '000	85 128	85 128	85 128	90 529	95 474	95 474	95 474	95 474	95 474	95 474	95 474	95 474
<b>Funding and cash reserves</b>													
Interest bearing liabilities	R '000	3 030 163	3 047 633	2 861 747	2 889 459	2 887 890	3 004 857	2 952 196	2 928 636	2 948 905	2 972 160	2 948 783	3 016 173
Average cost of borrowings	%	9.3%	9.4%	9.7%	9.9%	10.1%	10.4%	10.6%	10.9%	11.0%	11.2%	11.5%	11.6%
Cash and cash equivalents	R '000	440 877	587 765	437 390	398 037	312 521	672 079	709 609	691 726	778 749	725 186	731 410	838 994

## Monthly Investor Report

### Origination

		% change MOM	Apr 21	Mar 21	Feb 21	Jan 21	Dec 20	Nov 20	Oct 20	Sep 20	Aug 20	Jul 20	Jun 20	May 20
Disbursements	R '000	(11.2%)	<b>122 855</b>	138 417	117 519	83 819	133 628	126 669	118 516	101 133	89 093	81 318	80 891	50 491
Number of new loans		(11.1%)	<b>2 412</b>	2 712	2 226	1 601	2 677	2 588	2 405	2 005	1 803	1 727	1 590	893
Average loan value at acquisition	Rand	(0.2%)	<b>50 935</b>	51 039	52 794	52 354	49 917	48 945	49 279	50 440	49 414	47 086	50 875	56 541
Average term at acquisition	Months	5.6%	<b>50.4</b>	47.7	47.3	46.7	46.4	45.2	45.4	45.8	45.0	44.8	44.7	46.0

### Loan claims purchased by Bayport Securitisation (RF) Ltd \*

		% change MOM	Apr 21	Mar 21	Feb 21	Jan 21	Dec 20	Nov 20	Oct 20	Sep 20	Aug 20	Jul 20	Jun 20	May 20
Loan claims purchased	R '000	247.6%	<b>269 810</b>	77 631	26 722	14 292	282 669	169 141	115 681	109 802	23 548	160 412	86 912	75 412
Number of loans purchased		206.4%	<b>4 569</b>	1 491	521	239	6 191	3 962	2 710	2 473	700	3 389	1 866	2 032
Average loan value purchased	Rand	13.4%	<b>59 052</b>	52 066	51 290	59 798	45 658	42 691	42 687	44 400	33 639	47 333	46 576	37 112
Average term of loans purchased	Months	1.3%	<b>46.7</b>	46.1	47.5	50.3	42.6	43.0	43.7	43.5	43.1	44.2	44.1	42.0

\* Loans disbursed by the originator that are not sold to Bayport Tutari RF (Ltd) are purchased by the issuer. The claims purchased by Tutari will be sold periodically to the issuer and thus a consolidated view of all originations has been disclosed.

### Statistics

#### Loans and advances by geographic location

Province	Cellular	Payroll	Debit order	Total
Eastern Cape	9%	7%	7%	7%
Free State	5%	1%	4%	4%
Gauteng	49%	63%	50%	52%
Kwazulu-Natal	11%	12%	12%	12%
Limpopo	4%	2%	5%	4%
Mpumulanga	4%	0%	5%	4%
Northern Cape	2%	0%	2%	2%
North-West	5%	13%	4%	5%
Western Cape	11%	2%	11%	10%
<b>Grand Total</b>	<b>100%</b>	<b>100%</b>	<b>100%</b>	<b>100%</b>

## Monthly Investor Report

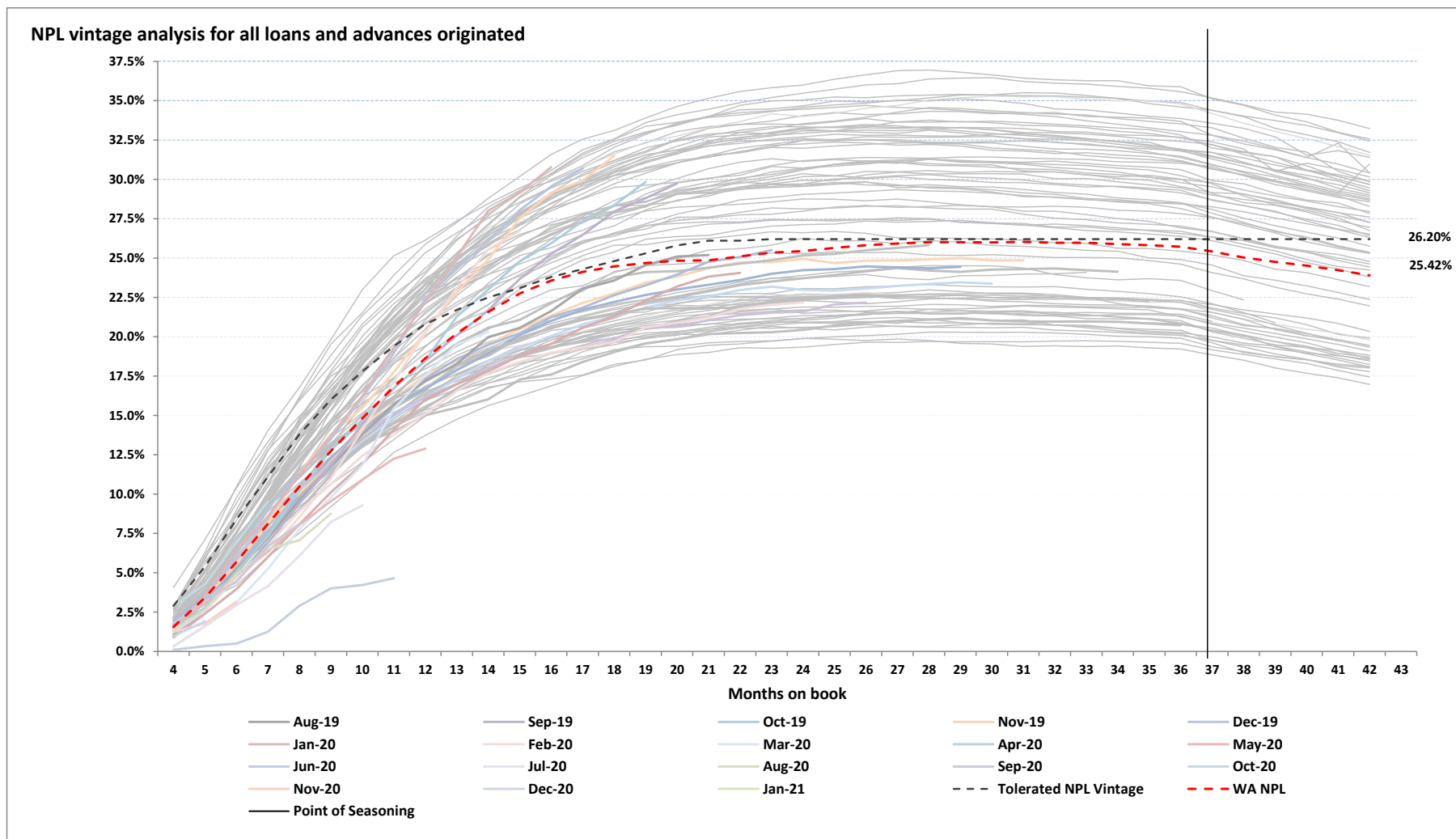
### Asset quality

	% change MOM	Apr 21 R'000	Mar 21 R'000	Feb 21 R'000	Jan 21 R'000	Dec 20 R'000	Nov 20 R'000	Oct 20 R'000	Sep 20 R'000	Aug 20 R'000	Jul 20 R'000	Jun 20 R'000	May 20 R'000
<b>Gross loans and advances</b>	2.1%	<b>5 183 800</b>	5 077 850	5 125 373	5 230 149	5 332 061	5 167 012	5 093 806	5 109 217	5 117 854	5 200 101	5 161 508	5 189 151
Performing loans	5.0%	<b>3 271 708</b>	3 115 831	3 149 322	3 267 199	3 370 359	3 205 807	3 145 586	3 158 789	3 167 278	3 253 733	3 234 230	3 270 176
Non-performing loans	(2.5%)	<b>1 912 092</b>	1 962 019	1 976 051	1 962 950	1 961 702	1 961 205	1 948 220	1 950 428	1 950 576	1 946 368	1 927 278	1 918 975
<b>Impairment provision *</b>													
Opening balance	(1.3%)	<b>2 356 471</b>	2 387 268	2 440 857	2 470 069	2 495 462	2 515 772	2 538 655	2 556 228	2 593 270	2 596 585	2 633 095	2 683 453
Bad debt written-off	10.7%	<b>(83 033)</b>	(75 026)	(87 187)	(74 977)	(85 804)	(69 601)	(71 812)	(69 990)	(68 286)	(70 967)	(82 422)	(98 551)
Provision raised	44.9%	<b>64 089</b>	44 229	33 598	45 765	60 411	49 291	48 929	52 417	31 244	67 652	45 912	48 193
Closing balance	(0.8%)	<b>2 337 527</b>	2 356 471	2 387 268	2 440 857	2 470 069	2 495 462	2 515 772	2 538 655	2 556 228	2 593 270	2 596 585	2 633 095

\* The IFRS 9 assumptions will be re-evaluated through the cycle to ensure the impacts of the COVID-19 pandemic are incorporated.

# Monthly Investor Report

## Asset quality (continued)



## Monthly Investor Report

### Asset quality (continued)

#### Reported under IFRS 9

#### Loans and advances distribution by contractual delinquency (CD)

	Apr 21	Mar 21	Feb 21	Jan 21	Dec 20	Nov 20	Oct 20	Sep 20	Aug 20	Jul 20	Jun 20	May 20
	%	%	%	%	%	%	%	%	%	%	%	%
<b>For all loans and advances originated</b>												
0	57.9%	56.2%	55.2%	54.9%	55.4%	55.1%	55.2%	54.4%	55.2%	55.4%	54.9%	53.8%
1	3.3%	3.5%	3.9%	4.2%	3.8%	3.7%	4.1%	4.7%	4.2%	4.1%	4.3%	5.1%
2	2.6%	3.0%	3.0%	3.1%	3.2%	3.6%	3.3%	3.4%	3.5%	3.3%	3.9%	4.5%
3	2.4%	2.6%	2.8%	3.0%	3.0%	2.9%	2.9%	3.1%	2.8%	3.1%	3.3%	3.5%
4 +	33.8%	34.7%	35.1%	34.8%	34.6%	34.7%	34.5%	34.4%	34.3%	34.1%	33.6%	33.1%
<b>For Bayport Securitisation (RF) Ltd</b>												
0	54.2%	51.7%	51.1%	51.7%	52.8%	51.5%	50.9%	50.1%	51.0%	51.7%	51.0%	49.7%
1	3.5%	3.7%	4.1%	4.4%	4.0%	3.8%	4.3%	4.9%	4.3%	4.3%	4.3%	5.0%
2	2.8%	3.2%	3.2%	3.2%	3.3%	3.7%	3.5%	3.6%	3.6%	3.4%	4.0%	4.6%
3	2.6%	2.8%	3.0%	3.2%	3.1%	3.0%	3.1%	3.2%	3.0%	3.2%	3.4%	3.7%
4 +	36.9%	38.6%	38.6%	37.5%	36.8%	38.0%	38.2%	38.2%	38.1%	37.4%	37.3%	37.0%
<b>Monthly loans and advances movement</b>												
	Apr 21	Mar 21	Feb 21	Jan 21	Dec 20	Nov 20	Oct 20	Sep 20	Aug 20	Jul 20	Jun 20	May 20
	R'000	R'000	R'000	R'000	R'000	R'000	R'000	R'000	R'000	R'000	R'000	R'000
Opening balance	5 077 850	5 125 373	5 230 149	5 332 061	5 167 012	5 093 806	5 109 217	5 117 854	5 200 101	5 161 508	5 189 151	5 232 695
Disbursements	269 810	77 631	26 722	14 292	282 669	169 141	115 681	109 802	23 548	160 412	86 912	75 412
Interest and other similar income	74 139	69 345	72 354	75 555	74 626	77 174	74 735	74 963	75 086	75 353	74 478	72 686
Non-interest revenue and other movements	(18 908)	38 740	24 813	17 785	42 103	42 844	29 538	20 826	19 655	2 545	17 761	28 431
Collections	(136 058)	(158 213)	(141 478)	(134 567)	(148 545)	(146 352)	(163 553)	(144 238)	(132 250)	(128 751)	(124 372)	(121 522)
Bad debt write-offs	(83 033)	(75 026)	(87 187)	(74 977)	(85 804)	(69 601)	(71 812)	(69 990)	(68 286)	(70 967)	(82 422)	(98 551)
Closing balance	5 183 800	5 077 850	5 125 373	5 230 149	5 332 061	5 167 012	5 093 806	5 109 217	5 117 854	5 200 101	5 161 508	5 189 151

## Monthly Investor Report

### Liquidity and funding

	% change MOM	<b>Apr 21</b> <b>R'000</b>	Mar 21 R'000	Feb 21 R'000	Jan 21 R'000	Dec 20 R'000	Nov 20 R'000	Oct 20 R'000	Sep 20 R'000	Aug 20 R'000	Jul 20 R'000	Jun 20 R'000	May 20 R'000
<b>Funding</b>													
Class A Notes (senior)	(0.0%)	<b>2 179 497</b>	2 180 497	1 992 350	1 992 350	1 992 350	2 110 561	2 110 561	2 110 561	2 130 159	2 130 159	2 130 159	2 207 799
Class B Notes (mezzanine)	0.0%	<b>580 000</b>	580 000	580 000	580 000	580 000	580 000	520 000	520 000	550 000	550 000	550 000	525 000
Other subordinated funding	(5.7%)	<b>270 666</b>	287 136	289 397	317 109	315 539	314 296	321 635	298 075	268 746	292 001	268 624	283 374
Total interest bearing liabilities	(0.6%)	<b>3 030 163</b>	3 047 633	2 861 747	2 889 459	2 887 890	3 004 857	2 952 196	2 928 636	2 948 905	2 972 160	2 948 783	3 016 173
Average cost of borrowings	(0.7%)	<b>9.3%</b>	9.4%	9.7%	9.9%	10.1%	10.4%	10.6%	10.9%	11.0%	11.2%	11.5%	11.6%
Cash and cash equivalents	(25.0%)	<b>440 877</b>	587 765	437 390	398 037	312 521	672 079	709 609	691 726	778 749	725 186	731 410	838 994



## Monthly Investor Report

### Liquidity and funding (continued)

Instrument	Coupon rate	Class	Nominal amount at issue	Month end principal balance	Issue date	Maturity date
BAYA57	3-month JIBAR plus 5.50%	A	50 000 000	50 000 000	2017/04/03	2022/03/31
BAYA64	3-month JIBAR plus 4.50%	A	40 000 000	40 000 000	2017/12/01	2022/09/30
BAYA67	11.170%	A	100 000 000	100 000 000	2018/04/03	2023/03/31
BAYA71	3-month JIBAR plus 3.75%	A	134 000 000	66 500 000	2018/07/02	2021/06/30
BAYA72	12.180%	A	384 000 000	384 000 000	2019/04/01	2026/03/31
BAYA73	3-month JIBAR plus 3.94%	A	412 000 000	117 917 670	2019/04/01	2022/03/31
BAYA74	3-month JIBAR plus 3.80%	A	125 000 000	88 608 138	2019/07/01	2024/07/01
BAYA75	3-month JIBAR plus 3.65%	A	140 000 000	45 605 554	2019/07/01	2022/07/01
BAYA76	3-month JIBAR plus 3.65%	A	30 062 075	5 916 846	2019/07/01	2022/07/01
BAYA77	3-month JIBAR plus 3.75%	A	200 000 000	95 189 784	2019/09/30	2022/09/30
BAYA78	3-month JIBAR plus 4.75%	A	50 000 000	35 001 384	2020/03/31	2023/03/31
BAYA79	3-month JIBAR plus 4.75%	A	150 000 000	104 142 656	2020/04/30	2023/03/31
BAYA80	3-month JIBAR plus 4.75%	A	100 000 000	77 369 392	2020/06/30	2023/06/30
BAYA81	3-month JIBAR plus 5.00%	A	91 500 000	91 500 000	2020/06/30	2023/06/30
BAYA82	3-month JIBAR plus 4.75%	A	70 000 000	59 477 126	2020/09/30	2023/09/30
BAYA83	3-month JIBAR plus 5.00%	A	100 000 000	100 000 000	2020/09/30	2023/09/30
BAYA84	3-month JIBAR plus 4.50%	A	142 500 000	62 500 000	2020/11/30	2022/12/31
BAYA85	3-month JIBAR plus 5.00%	A	142 500 000	62 500 000	2020/11/30	2023/12/31
BAYA86	3-month JIBAR plus 4.50%	A	65 707 358	65 707 358	2021/03/31	2023/03/31
BAYA87	3-month JIBAR plus 5.00%	A	172 561 038	172 561 038	2021/03/31	2024/03/31
BAYA88	3-month JIBAR plus 4.75%	A	175 000 000	175 000 000	2021/03/31	2024/03/31
BYA69U	3-month JIBAR plus 4.50%	A	80 000 000	80 000 000	2021/03/31	2022/12/31
BYA70U	3-month JIBAR plus 5.00%	A	100 000 000	100 000 000	2021/03/31	2023/12/31
<b>Subtotal Class A notes</b>			<b>3 054 830 471</b>	<b>2 179 496 947</b>		
BYB10U	3-month JIBAR plus 8.00%	B	5 000 000	5 000 000	2016/09/30	2021/09/30
BYB10U_1	3-month JIBAR plus 8.00%	B	1 000 000	1 000 000	2017/06/30	2021/09/30
BAYB12	3-month JIBAR plus 6.00%	B	1 000 000	1 000 000	2018/07/02	2021/06/30
BAYB13	3-month JIBAR plus 6.25%	B	170 000 000	170 000 000	2018/10/01	2023/09/30
BAYB14	3-month JIBAR plus 6.25%	B	50 000 000	30 000 000	2018/10/01	2023/09/30
BAYB15	3-month JIBAR plus 6.25%	B	30 000 000	30 000 000	2018/10/01	2023/09/30
BAYB16	3-month JIBAR plus 6.50%	B	48 000 000	48 000 000	2019/10/10	2024/09/30
BAYB18	3-month JIBAR plus 6.25%	B	20 000 000	20 000 000	2019/09/30	2022/09/30
BAYB19	3-month JIBAR plus 6.25%	B	115 000 000	115 000 000	2019/09/30	2022/09/30
BAYB20	3-month JIBAR plus 6.75%	B	160 000 000	160 000 000	2020/06/30	2023/09/30
<b>Subtotal Class B notes</b>			<b>600 000 000</b>	<b>580 000 000</b>		
<b>Total</b>			<b>3 654 830 471</b>	<b>2 759 496 947</b>		

## Monthly Investor Report

### Covenant compliance

	Current requirement	Apr 21	Mar 21	Feb 21	Jan 21	Dec 20	Nov 20	Oct 20	Sep 20	Aug 20	Jul 20	Jun 20	May 20
<b>Financial covenants</b>													
Senior Debt Cash Flow Cover Ratio	≥ 1.50 times	2.3	2.4	2.3	1.9	2.2	2.2	2.5	2.1	1.9	1.9	1.6	1.6
Senior Debt Interest Cover Ratio	≥ 3.50 times	6.2	5.6	6.4	6.0	5.3	6.0	5.9	5.7	5.8	5.8	4.9	4.7
Senior Debt to Net Qualifying Asset Value	≤ 70.0%	61.8%	61.5%	58.4%	58.2%	58.5%	59.1%	60.0%	60.5%	59.8%	59.9%	60.5%	61.0%
Bad and Doubtful Debt Ratio	≤ 17.5%	9.8%	9.8%	9.8%	10.0%	10.1%	11.1%	11.2%	11.8%	11.9%	11.8%	12.0%	11.5%
Equity invested in the Company by the Originator	> 22.5%	32.2%	34.5%	34.5%	34.9%	30.3%	33.0%	34.8%	34.5%	33.8%	33.8%	33.9%	34.3%
Cellular Contracts as a % of the Portfolio	≤ 10.0%	1.2%	1.3%	1.3%	1.3%	1.3%	1.3%	1.4%	1.4%	1.4%	1.4%	1.4%	1.4%
<b>Cash reserves</b>													
Liquidity reserve (R'000)	≥ 250,000	250 000	250 000	250 000	250 000	250 000	250 000	250 000	250 000	250 000	250 000	250 000	250 000
Arrears reserve													
Weighted NPLs as a percentage of the portfolio	≤ 26.2%	25.4%	25.5%	25.6%	26.0%	26.2%	26.1%	26.0%	26.2%	26.6%	26.7%	26.9%	27.1%
Reserve required (R'000)		-	-	-	-	-	-	-	-	2 479	3 803	4 787	6 190
Asset performance reserve													
Collections ratio	≥ 80.75%	109.3%	110.1%	107.6%	106.7%	106.9%	105.7%	101.0%	96.0%	95.8%	98.3%	98.9%	102.7%
Reserve required (R'000)		-	-	-	-	-	-	-	-	-	-	-	-
Reserved cash (R'000)		250 000	250 000	250 000	250 000	250 000	250 000	250 000	250 000	247 521	246 197	245 213	243 810
Expected collections (6 month average) (R'000)		71 307	71 180	72 286	73 415	73 277	72 261	72 421	72 498	73 326	74 226	76 418	79 129
Actual receipts (6 month average) (R'000)		77 905	78 368	77 790	78 346	78 329	76 390	73 152	69 606	70 272	72 989	75 586	81 263
Capital redemption reserve (R'000)		-	-	-	-	-	-	-	-	90 000	72 000	-	-

## Monthly Investor Report

### Glossary of terms

<b>CD</b>	Contractual delinquency = accumulated arrears / contractual instalment
<b>MOB</b>	Months on book
<b>MoM</b>	Months on month
<b>YTD</b>	Year to date
<b>Non-performing loans</b>	The balance outstanding of loans and advances with a contractual delinquency greater than three months excluding loans and advances with a contractual delinquency greater than three months where three consecutive receipts have been received in the three-month period preceding the measurement date
<b>Non-performing loans ratio</b>	Non-performing loans / Gross loans and advances
<b>Provision coverage</b>	Impairment provision / Gross loans and advances